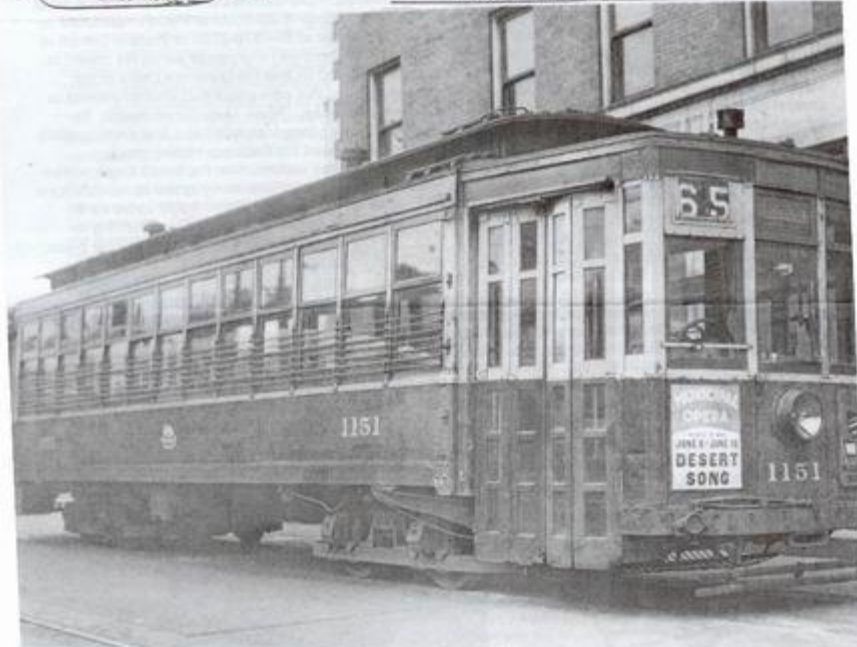


THE ST. LOUIS
RAILWAY ENTHUSIASTS, INC
WHISTLE TALK

ST. LOUIS DIVISION OF THE RAILROAD ENTHUSIASTS, INC.

DECEMBER 2004



Noel M. Moss,	President	14 N. Kingshighway Blvd.,	St. Louis, Mo. 63108-1363	(314) 357-3189
Steven P. Binning,	Vice President	341 Charlottesville Dr.,	St. Charles, Mo. 63304-1038	(314) 537-7162
Glen E. Greenway,	Secretary	2666 Laclede Station Pl.,	St. Louis, Mo. 63143-	(314) 647-3560
Wallace F. Dittich,	Treasurer	4624 South Broadway Blvd.,	St. Louis, Mo. 63111-1311	(314) 353-0119
Charles D. Dasho	Programs	1980 Avon Drive	Florissant, Mo. 63033-1223	(314) 831-0725
David J. Neubauer	Editor	1509 Ville Angels Lane,	Hazelwood, Mo. 63042-1830	(314) 291-3928
Thomas K. Koniczny	Contrib Editor	2101 Mathilda Drive,	Belleville, Il. 62225	(618) 235-1309

nmoss@ameripost.com/greenway@aol.com/ Dasho.cdash@mail@cs.com/ Neubauer: t1556djin@earthlink.net
To obtain or renew membership send \$20 to Wallace F. Dittich, Treasurer, address above. Membership year runs September thru August. Meetings the 2nd Thurs. 7:30 PM at Brookings Retirement Home, 307 Woods Mill. The 2nd intersection north of I-64 on "141". It is across "141" from St. Luke's Hospital. It is up the hill a couple blocks from the intersection and is the building on the right.

Cover: The theme of December is always the St. Louis Public Service 65-Woodson Road line, which was a favorite of three of the SLRE, that being the late Jim Seamon, the present Bill Cordes and myself. The car is one of the "higher speed" older cars because it had 4 motors. Also the 1100s pulled trailers on the 70-Grand. Note the link and pin style coupler on the rear of the car. The line went off on December 28, 1948 and this photo from the Malcolm McCarter archive (purchased by David J. Neubauer from the William J. Clouser collection) must be near that cycle. The reason I says this is that there is an ad card on the left front of the car depicting the new diesels on the Wabash's new train, the *Blue Bird* and the train with 4 dome cars had entered service fairly recently. (Hey, SLRE Vance Lisher, "Mr. Wabash", can you tell us when the *Blue Bird* entered service? I guess I could go upstairs and look in the Heimburger House book on the railroad, but that would be too much of a trip!) I am typing this copy while I have a video on my downstairs TV/VCR with me aboard a New Orleans streetcar. The SLPS 1151 is at the Wellston Loop. That is the Katz Drugstore building next to it. The track in lower left corner is for the 32-Wellston. That little round device on the roof must be for the coke stove for heating and not a GPS mechanism?

Contents:

- Article about potential Metrolink expansion in Madison County, Illinois.
- Bill Cordes' history of St. Louis car line names.
- LOTs of photos of the Metrolink Cross County extension construction.
- Some great St. Louis streetcar photos from DJN's collection.