

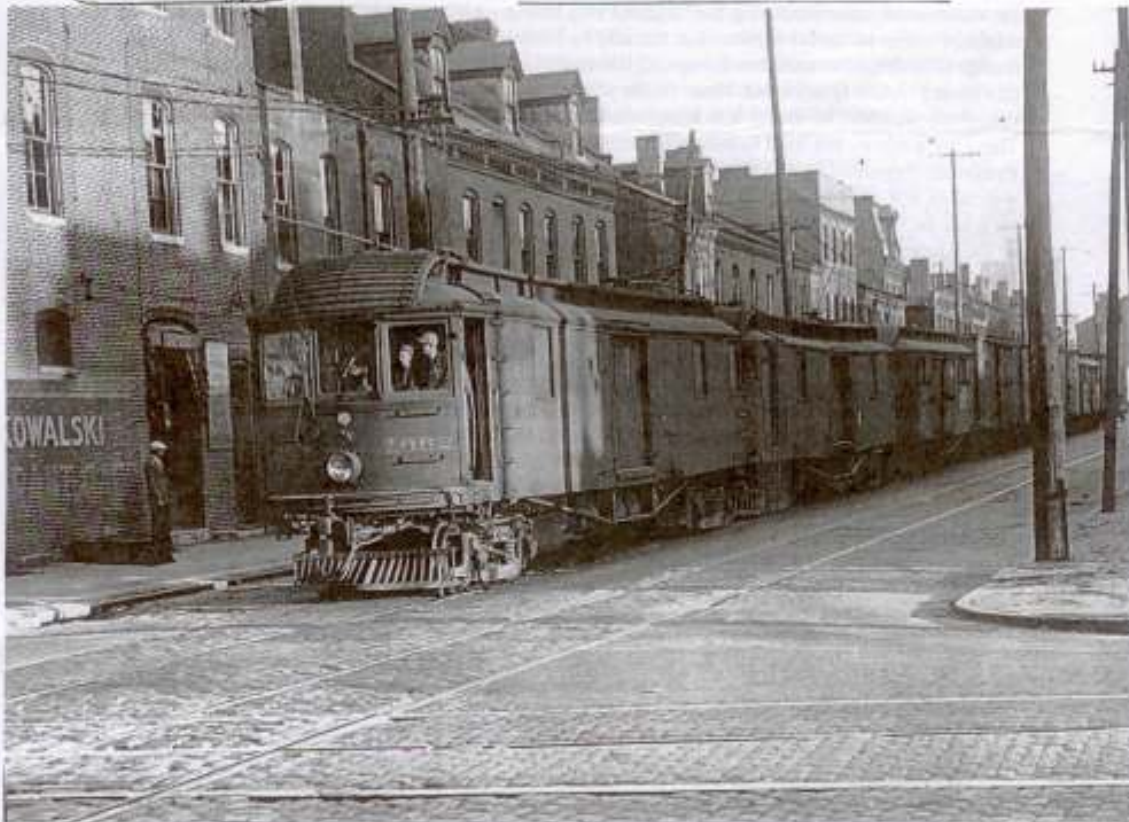


THE ST. LOUIS RAILWAY ENTHUSIASTS, INC. WHISTLE TALK

ST. LOUIS DIVISION OF THE RAILROAD ENTHUSIASTS, INC.

MARCH 2008

"slre.org"



Mark D. Goldfeder, President	1064 Ferrgate Lane,	St. Louis	MO 63141-6130 (314)878-2786
Steven P. Binning, Vice-Pres.	341 Charlottesville Dr.,	St. Charles,	MO 63304-1008 (314)537-7162
Kelvin K. Wilke, Secretary	5 Buck Court,	Arnold,	MO 63010-1974 (636)296-6228
Wallace F. Dittrich, Treasurer	4824 S. Broadway	St. Louis,	MO 63111-1311 (314)353-0119
Charles D. Dasho, Programs	1980 Avon Drive,	Florissant,	MO 63033-1223 (314)831-0726
David J. Neubauer, Editor	1569 Ville Angela Lane	Hazelwood,	MO 63042-1630 (314)291-3928
Thomas Konieczny, Contrib-Ed	2101 Mathilda Drive,	Belleville,	IL 62226-7357 (618)235-1309

sbinning@sbcglobal.net/kwilke4@sbcglobal.net/t1569djn@earthlink.net/odashmail@cs.com

To obtain or renew membership send \$20 c/o Wallace F. Dittrich, Treasurer, address above.

Membership year runs September thru August. Meetings, 2nd Thursday, 7:30 PM at Brookings Retirement Home, 307 Woods Mill. The 2nd intersection north of I-64 on "141". It is across "141" from St. Lukes Hospital. It is up the hill a couple blocks from the intersection and is the building on the right.

Cover: Illinois Traction freight train coming north on Hadley Street at Cass Avenue back when the buildings were still all there. Steve Marx knows the various businesses that were in the area. The late afternoon sun is blazing down on the buildings. And one can tell it is NB as there is a downtown St. Louis building on the skyline in sort of a haze above the first boxcar of the train. The significance of the photo, originally from the Ray Gehl collection, is seeing a “full blown” freight train of the ITS on the streets of St. Louis. Up until 1925 when the ordinance was modified, the ITS had to limit its freight haulage with what was called “Pull Cars”, passenger cars disguised as freight units and these could only haul one other car. With the change the line could now pull longer trains as is evident in this period photo. Beside the three 1050 class units there is a sizeable train of boxcars too. Within six or seven years this scene was past history as the “local good earth” was dug up and sizeable construction brought the Midwest Terminal Building onto the scene and the mainline went underground. There did remain some above ground switching into various team tracks and industrial spurs in closer to the old above ground terminal.

Contents:

- DJN's extended ramblings and news bits.
- Feb 2008 meeting was the Tatra streetcar plant in the Czech Republic, by Stan Griffith (via Charlie Dasho). Also the New Haven RR circa 1948 during its transition from steam to diesel.
- Latest MTTV status.
- News about the ITS meet coming up in April in Alton, IL.
- Oliver Blackburn obituary and tribute column “Centenarian of the Times”.
- Transcript of the Missouri Freight and Passenger Rail Capacity Analysis, Executive Summary.
- Article about Metro's 2008 budget.